

Summer Reading 2024



Instructions

The summer vacation period is a wonderful time for students to have a short break from attending school every day, but a great opportunity to keep learning. Our summer reading program is targeted to help students continue to enhance their reading skills during the months of June, July, and August.

This year, we will be providing your child with a hard copy book to read over the Summer ☺

Incoming 4th Grade Summer Reading Book is **Charlotte's Web** by E.B. White.

Your child will be responsible for reading their book and completing the assignments provided in this packet.

****Please bring in all work on the first day of school (Thursday, August 15), as it will count as a grade for the first quarter. (Your child does not need to return the book)**

Throughout the summer, if you have any questions, please call the main office at (305) 231-4888.

Please sign, and return on the first day of school, along with the completed assignments.

Student's Name: _____

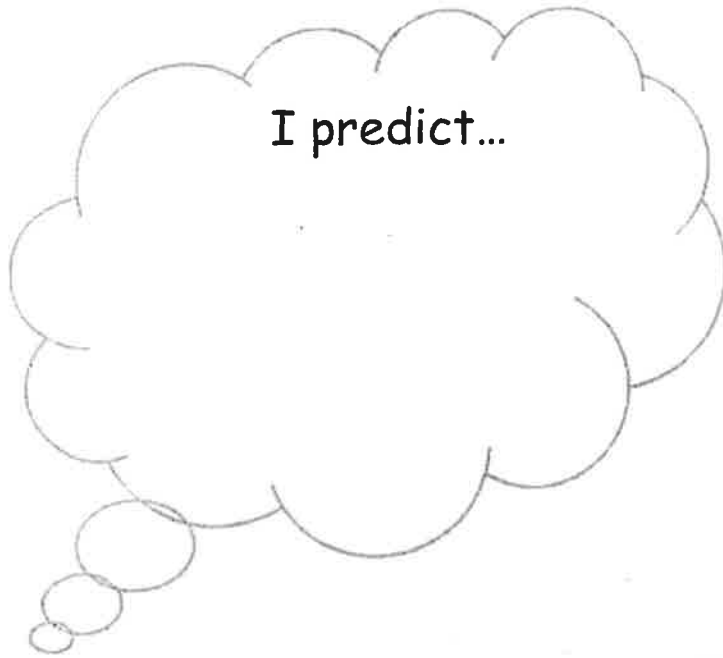
Parent's Signature: _____

Name : _____

Date: _____

Story Title: _____

Author: _____



Vocabulary Words	Definition
runt	
surly	
idiosyncrasy	
astonishing	
pompous	

Fiction or Non-Fiction
 (False) (Not False)

because _____

Genre: _____

Point of View
 Who is telling the story?

First Person or Third Person
 (character in the story) (narrator or outsider)

Pronoun Clues:

Author's Purpose

Persuade Inform Entertain

Characters
 Who is the main character?

Two character traits that describe this character:
 _____ & _____

How are you and the main character similar?

How are you and the main character different?

Supporting Characters:

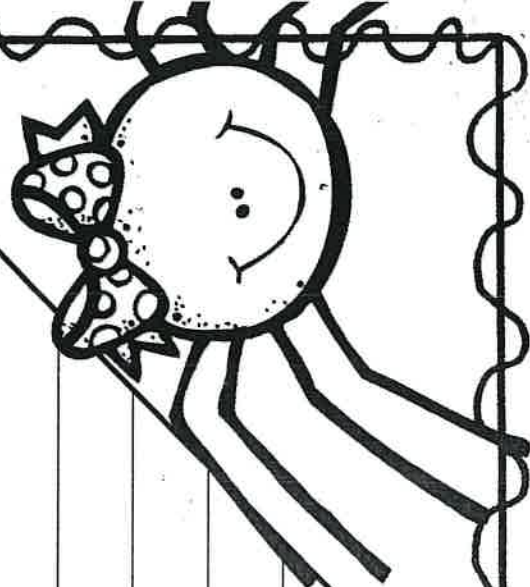
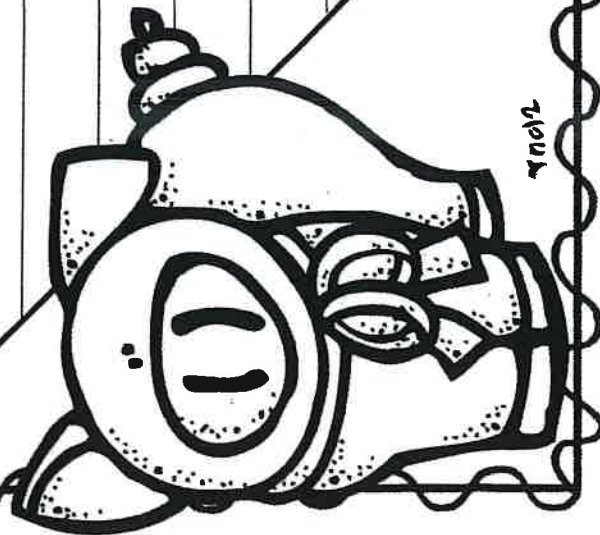
Setting
 Where does the story mainly take place?

In Charlotte's Web by E. B. White, the main characters are Charlotte, a spider, and Wilbur, a pig. Wilbur and Charlotte are alike, yet different, in many ways.

Charlotte

Both

Wilbur

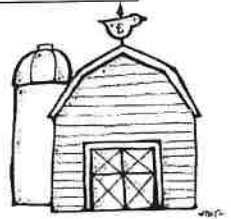


Name _____

Date _____



Charlotte's Web



Journaling by Chapter

As you read Charlotte's Web by E.B.White, stop after every other chapter to think about what has happened in the story. Answer the questions when you finish the chapters listed before moving on to the next chapter.

<p>Chapter 2</p> <p>How do you think Wilbur's move will affect his relationship with Fern?</p> <hr/> <hr/> <hr/> <hr/> <hr/> <hr/> <hr/> <hr/> <hr/> <hr/>	<p>Chapter 4</p> <p>Where do you think the friendly voice is coming from? Who do you think it could be?</p> <hr/> <hr/> <hr/> <hr/> <hr/> <hr/> <hr/> <hr/> <hr/> <hr/>	<p>Chapter 6</p> <p>Would you like to spend a summer on a farm? Why or why not?</p> <hr/> <hr/> <hr/> <hr/> <hr/> <hr/> <hr/> <hr/> <hr/> <hr/>
<p>Chapter 8</p> <p>What did Mr. Arable mean when he said, "Maybe our ears aren't as sharp as Fern's?"</p> <hr/> <hr/> <hr/> <hr/> <hr/> <hr/> <hr/> <hr/> <hr/> <hr/>	<p>Chapter 10</p> <p>Why do you think Charlotte is planning to save Wilbur's life?</p> <hr/> <hr/> <hr/> <hr/> <hr/> <hr/> <hr/> <hr/> <hr/> <hr/>	<p>Chapter 12</p> <p>How do you think the animals feel about most humans? Why?</p> <hr/> <hr/> <hr/> <hr/> <hr/> <hr/> <hr/> <hr/> <hr/> <hr/>

Chapter 14

Why did Fern's mother feel relieved after speaking with Dr. Dorian?

Chapter 16

How does Wilbur feel about going to the County Fair?
How do you know?

Chapter 18

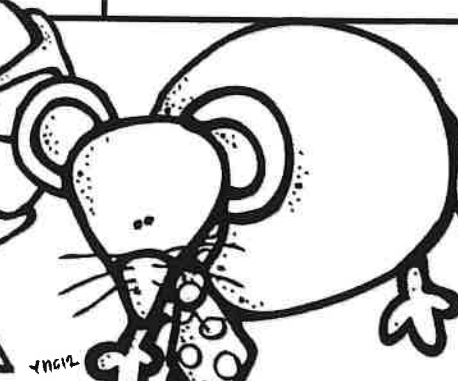
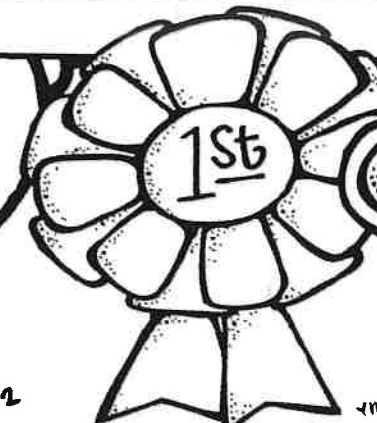
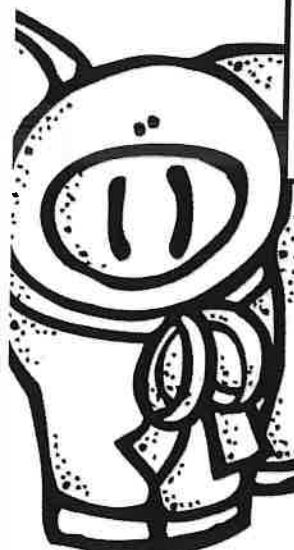
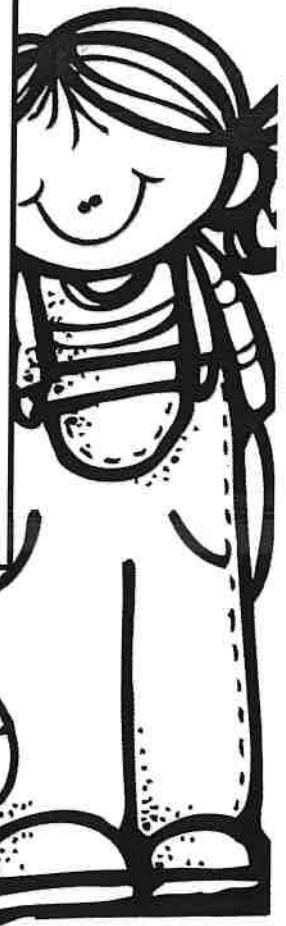
What word best describes Charlotte? Why?

Chapter 20

Why do you think Fern was not there to see Wilbur win his award?

Chapter 22

How were Charlotte, Wilbur, and Templeton all heroes?



7nol2

7nol2

7nol2