



## Summer Reading 2023



### Instructions

The summer vacation period is a wonderful time for students to have a short break from attending school every day, but a great opportunity to keep learning. Our summer reading program is targeted to help students continue to enhance their reading skills during the months of June, July, and August.

This year, we will be providing your child with a hard copy book to read over the Summer 😊

**Incoming 4<sup>th</sup> Grade** Summer Reading Book is *Charlotte's Web* by E.B. White.

Your child will be responsible for reading their book and completing the assignments provided in this packet.

**\*\*Please bring in all work on the first day of school, as it will count as a grade for the first quarter. (Your child does not need to return the book)**

Throughout the summer, if you have any questions, please call the main office at (305) 231-4888.

*Please sign, and return on the first day of school, along with the completed assignments.*

Student's Name: \_\_\_\_\_

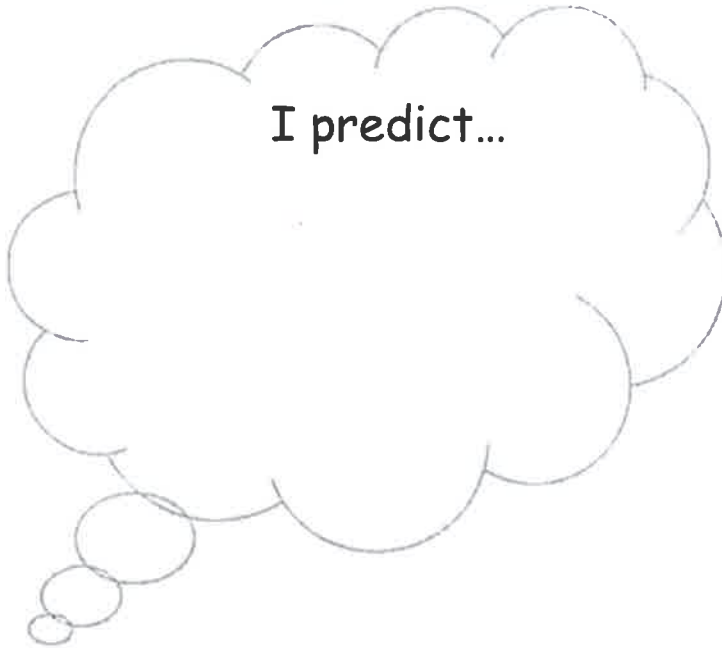
Parent's Signature: \_\_\_\_\_

Name : \_\_\_\_\_

Date: \_\_\_\_\_

Story Title: \_\_\_\_\_

Author: \_\_\_\_\_



Vocabulary Words	Definition
runt	
surly	
idiosyncrasy	
astonishing	
pompous	

**Fiction or Non-Fiction**  
 ( False ) ( Not False )  
 because \_\_\_\_\_  
 \_\_\_\_\_  
**Genre:** \_\_\_\_\_

**Point of View**  
 Who is telling the story?  
**First Person or Third Person**  
 (character in the story) (narrator or outsider)  
**Pronoun Clues:**

**Author's Purpose**  
 Persuade Inform Entertain

**Characters**  
 Who is the main character?  
 \_\_\_\_\_  
 Two character traits that describe this character:  
 \_\_\_\_\_ & \_\_\_\_\_  
 How are you and the main character similar?  
 \_\_\_\_\_  
 How are you and the main character different?  
 \_\_\_\_\_  
 Supporting Characters:

**Setting**  
 Where does the story mainly take place?  
 \_\_\_\_\_

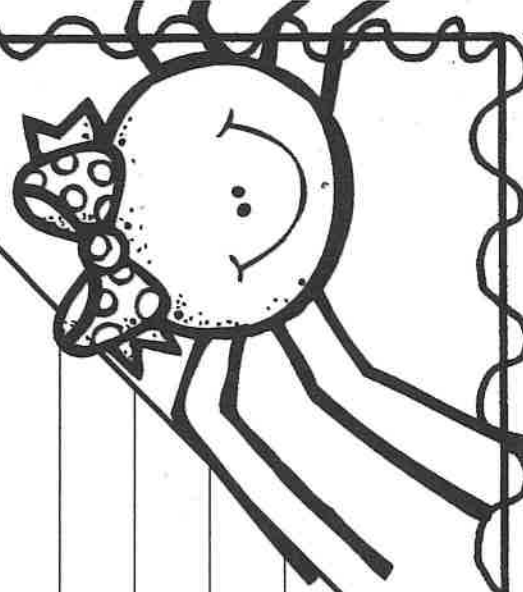
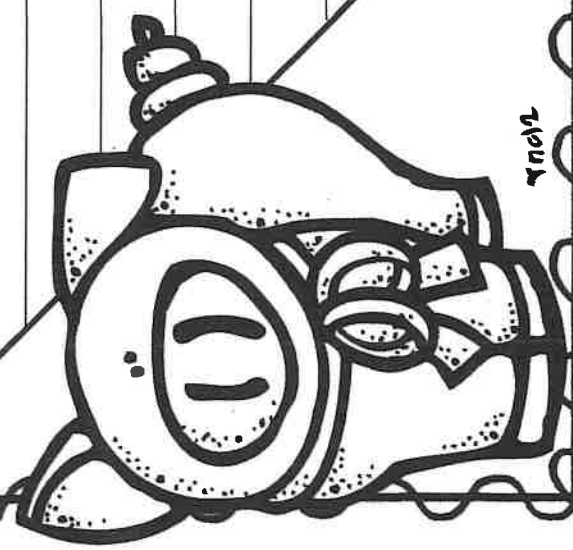
In Charlotte's Web by E. B. White, the main characters are Charlotte, a spider, and Wilbur, a pig. Wilbur and Charlotte are alike, yet different, in many ways.

**Charlotte**

**Both**

**Wilbur**

A large diamond-shaped writing area with horizontal lines, divided into three sections by two diagonal lines. The top section is labeled 'Charlotte', the middle section 'Both', and the bottom section 'Wilbur'.



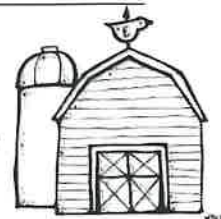
Name \_\_\_\_\_

Date \_\_\_\_\_

# \_\_\_\_\_



# Charlotte's Web



## Journaling by Chapter

As you read *Charlotte's Web* by E.B. White, stop after every other chapter to think about what has happened in the story. Answer the questions when you finish the chapters listed before moving on to the next chapter.

<p><b>Chapter 2</b></p> <p>How do you think Wilbur's move will affect his relationship with Fern?</p> <hr/> <hr/> <hr/> <hr/> <hr/> <hr/> <hr/> <hr/> <hr/> <hr/>	<p><b>Chapter 4</b></p> <p>Where do you think the friendly voice is coming from? Who do you think it could be?</p> <hr/> <hr/> <hr/> <hr/> <hr/> <hr/> <hr/> <hr/> <hr/> <hr/>	<p><b>Chapter 6</b></p> <p>Would you like to spend a summer on a farm? Why or why not?</p> <hr/> <hr/> <hr/> <hr/> <hr/> <hr/> <hr/> <hr/> <hr/> <hr/>
<p><b>Chapter 8</b></p> <p>What did Mr. Arable mean when he said, "Maybe our ears aren't as sharp as Fern's?"</p> <hr/> <hr/> <hr/> <hr/> <hr/> <hr/> <hr/> <hr/> <hr/> <hr/>	<p><b>Chapter 10</b></p> <p>Why do you think Charlotte is planning to save Wilbur's life?</p> <hr/> <hr/> <hr/> <hr/> <hr/> <hr/> <hr/> <hr/> <hr/> <hr/>	<p><b>Chapter 12</b></p> <p>How do you think the animals feel about most humans? Why?</p> <hr/> <hr/> <hr/> <hr/> <hr/> <hr/> <hr/> <hr/> <hr/> <hr/>

**Chapter 14**

Why did Fern's mother feel relieved after speaking with Dr. Dorian?

---

---

---

---

---

---

---

---

---

---

---

---

**Chapter 16**

How does Wilbur feel about going to the County Fair? How do you know?

---

---

---

---

---

---

---

---

---

---

---

---

**Chapter 18**

What word best describes Charlotte? Why?

---

---

---

---

---

---

---

---

---

---

---

---

**Chapter 20**

Why do you think Fern was not there to see Wilbur win his award?

---

---

---

---

---

---

---

---

---

---

---

---

**Chapter 22**

How were Charlotte, Wilbur, and Templeton all heroes?

---

---

---

---

---

---

---

---

---

---

---

---

